



Altiris® 6

Client Management Suite™

COMPREHENSIVE IT LIFECYCLE MANAGEMENT

Altiris® Client Management Suite™ is an easy-to-use systems management solution that reduces the total cost of ownership for desktops, notebooks, and handheld devices. Developed for IT professionals who manage computing devices on a regular basis, the suite enables administrators to deploy, manage, and troubleshoot systems from virtually anywhere.

BENEFITS

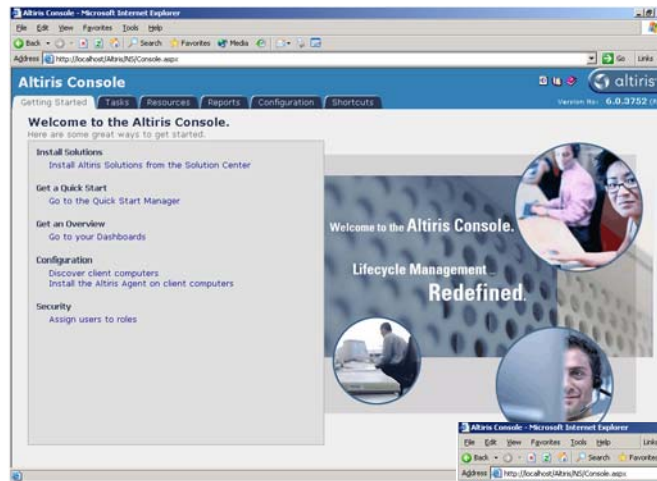
- > Secure management with role-and-scope-based security
- > Zero-touch OS deployment and migration
- > Integrated hardware and software inventory with Web-based reporting
- > Policy-based software management
- > Automated patch management
- > Software license compliance and harvesting
- > Native integration with Microsoft Active Directory
- > Centralized management of mixed hardware and OS environments
- > Intuitive management interface with real-time dashboards and distribution wizards

COMPREHENSIVE IT LIFECYCLE MANAGEMENT

Your IT department is faced with the challenging task of managing numerous, constantly changing clients, including desktops, notebooks, thin clients, and handhelds. Altiris can help. Altiris pioneered the concept of IT lifecycle management by bringing together what was traditionally thought of as disparate management disciplines and integrating them on a single, extensible platform. Client Management Suite provides the access and centralized management of critical enterprise resources while maintaining acceptable levels of security, support, and software management.

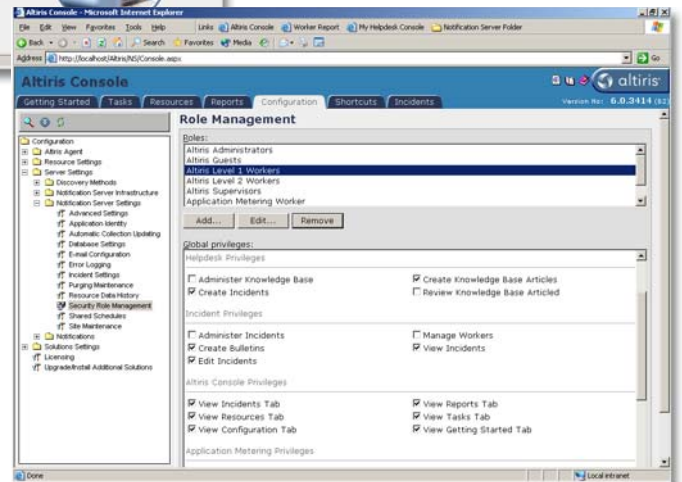
SECURE MANAGEMENT ENVIRONMENT

Client Management Suite's role-and-scope-based security model allows you to control access to every asset of your management environment. Control tasks that each technician can perform based on employee role and responsibility. In addition, the scope of management tasks that can be performed on specific computers is likewise centrally governed ensuring complete control of all management tasks within your enterprise. The Altiris 6 Console also introduces Altiris' Adaptive Display Technology™ (ADT™), which dynamically modifies the console interface for each user based on end-user preferences, language settings, and management rights. ADT is based on end-user logon credentials and simplifies console navigation, reduces clutter, and improves end-user productivity by only displaying authorized tasks and resources. For example, you can limit help desk workers to remote control and patch management tasks while broadening the rights of IT department workers to advanced management capabilities.



The Altiris Console's intuitive interface and Getting Started feature simplify training for new users.

Client Management Suite provides you with the most comprehensive, tightly integrated management solutions of any systems management vendor. With Client Management Suite you can address your IT challenges and optimize and control your IT environment—ultimately reducing the cost of owning and operating IT assets.



Role-and-scope-based security enables administrators to designate console access rights.



altiris®
intuitive > manageability

OS DEPLOYMENT AND MIGRATION

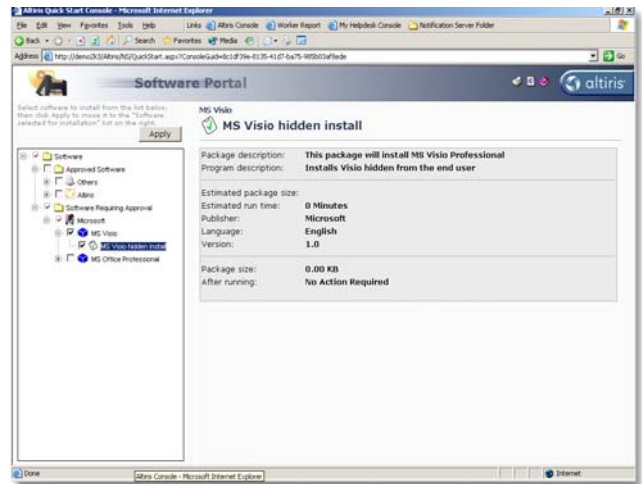
Cut the cost of deploying and managing the clients, desktops, notebooks, and handhelds in your environment with an easy-to-use, integrated suite that provides OS deployment, configuration, computer migrations, and software deployment across hardware platforms and operating system types. Simplify end-user OS upgrades with industry-leading migration technology that guides you through the process of capturing desktop, network, and application settings, along with user data. Once captured, this "personality" data is easily transferred to the target computers and integrates natively with Altiris Software Delivery Solution™ to ensure the proper applications and software are installed as part of the migration process. Client Management Suite also enables you to build a reference system using Altiris' unattended OS installation wizard. Once your reference system has been built with your standard OS and applications you can mass-deploy an image of the reference system and base applications to your new and existing systems. Deploying clients, desktops, notebooks, and handhelds has never been easier.

COMPREHENSIVE INVENTORY

To effectively manage your enterprise, you need an accurate and thorough inventory of your desktops, servers, notebooks, handhelds, and network devices. Knowing what you have and where it's located empowers you to reduce IT support costs, protect your network, improve success of software deployments, and focus on higher-level objectives.

Client Management Suite provides detailed hardware and software inventory across your enterprise platforms. Multi-platform support makes it easy to consolidate the discovery of all your Windows* and Macintosh* hardware and software assets within an integrated console (Linux*, UNIX*, handheld, and network device modules are also available).

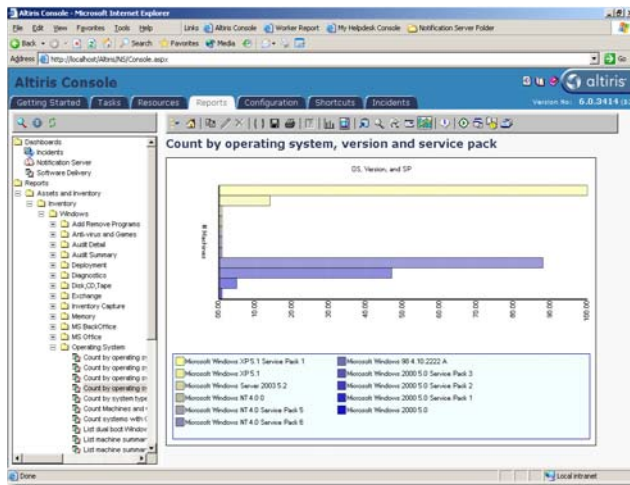
Client Management Suite aggregates inventory data across your environment so you can quickly and easily assess security vulnerabilities, prepare for software audits, and more accurately determine hardware needs and availability.



Altiris' self-help interfaces, such as the Software Portal, reduce help desk calls.

SOFTWARE LICENSE COMPLIANCE

You don't need to guess at whether you have the correct number of licenses, or even at who's using or not using which applications. With Client Management Suite you can correlate application installation information with Altiris application usage and contract administration data to provide complete software license management. By optimizing your software license environment, your organization can benefit from dramatic cost savings from harvesting unused license, reducing maintenance and support contract renewals, and more accurate planning for future software needs.



Altiris Web Reports provide comprehensive information about your IT environment.



SELF-SERVICE SOFTWARE DISTRIBUTION

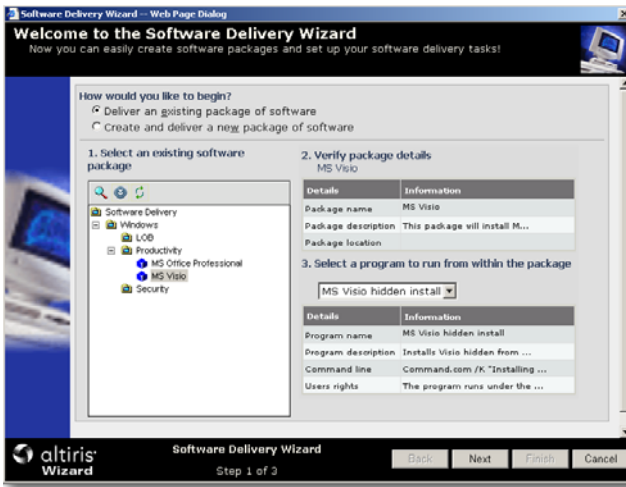
Not only can it push mandatory or critical updates such as patches, Client Management Suite also provides the ability to publish optional distribution tasks, allowing the end user to accept delivery or postpone delivery to a more accommodating time. The Altiris Software Portal also provides end users with self-serve software distribution. The portal is a secure software catalog that allows end users to

“Altiris...is at the forefront of desktop management innovation.”

—NETWORK COMPUTING magazine in awarding Altiris Client Management Suite its 2005 Editor’s Choice award

“To us, our employees’ ability to close a transaction means everything, so we measure ROI in system uptime and user satisfaction. Altiris helped us achieve 99.8 percent systems availability last year. We thought it would be tough for Altiris to improve on this success, but the Altiris 6 infrastructure delivers a groundbreaking user interface and platform that redefines efficient and intuitive IT lifecycle management.”

—TONY BURDICK
IT Director
William Blair
(The largest investment banking firm in Chicago)



The Software Delivery Wizard allows you to easily create software packages and roll out software delivery tasks.

select and download approved software applications in real time. Further integration with Altiris Helpdesk Solution™ and Alert Manager™ functionality is also available and provides automatic generation of help desk incidents and requests for those applications requiring authorization prior to install. Once approved, applications are then installed without requiring the technician to visit end-user desks.

WISE® SOFTWARE PACKAGING

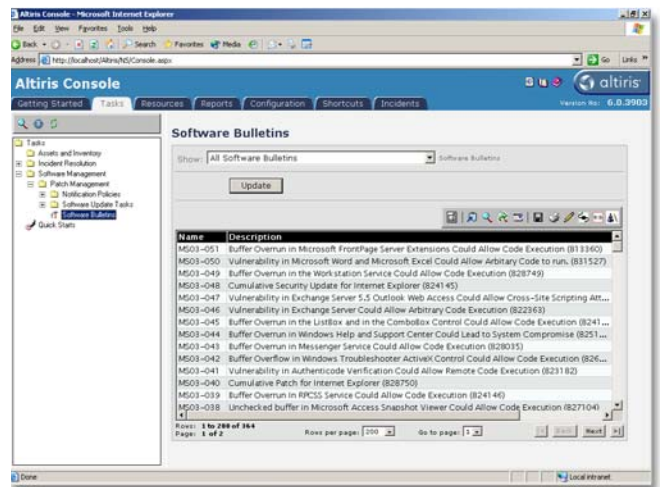
Client Management Suite includes Wise Package Studio® Professional Edition (one license per every 1,000 minimum nodes purchased), the industry-leading application that provides everything you need to prepare applications and updates for enterprise deployment. The suite allows you to efficiently migrate applications to the Windows Installer (.MSI) standard, fully customize application setups, test for and resolve conflicts prior to application deployment, and establish and maintain corporate standards. Wise Package Studio Professional Edition helps you significantly reduce desktop management and support costs by enabling reliable, standardized application rollouts.

BANDWIDTH-SENSITIVE SOFTWARE MANAGEMENT

Client Management Suite offers ongoing, policy-based software distribution and management for both the connected and mobile or remote user. Special emphasis is provided to the roaming or mobile worker with features such as dynamic bandwidth throttling and checkpoint recovery for slow connections or situations where the connection is lost during download. The suite also provides powerful, enterprise-wide remote control optimized to support any bandwidth and includes full-featured chat.

APPLICATION SELF-HEALING AND ROLLBACK

Client Management Suite supports installation and management of Windows Installer (MSI) packages on client computers and ensures that MSI applications properly support self-healing, and install on-demand functions. Use Client Management Suite to gather inventory information about MSI applications down to an installed feature level, schedule regular application health checkups, and proactively repair missing or changed files, broken source paths, or registry values. If unauthorized changes are discovered, applications can easily be rolled back or repaired and restored to their original state. You can also perform routine baseline comparisons to detect changes that may negatively impact a computer’s performance, such as a file change without proper registration with Windows Installer.



Automatically identify vulnerabilities and target systems for critical updates.



“The \$300,000 we spent on Altiris is an excellent investment compared to the \$1 million it costs us each time we need to touch all the workstations. Altiris is the only game in town. No one else is even close.”

—IT MANAGER
(A dept. of the U.S. government)

“Altiris Client Management Suite has enabled us to avoid all the headaches that come with a large roll-out as it permitted us to manage the complete deployment and configuration of workstations from a single and intuitive console. Altiris Client Management Suite has not only kept the productivity loss and the cost of this project at a minimum, but also represents the key to overall systems management cost-savings and significantly enhanced levels of end-user satisfaction.”

—RICHARD MAY
Network Manager
Museum of London Group

AUTOMATED PATCH MANAGEMENT

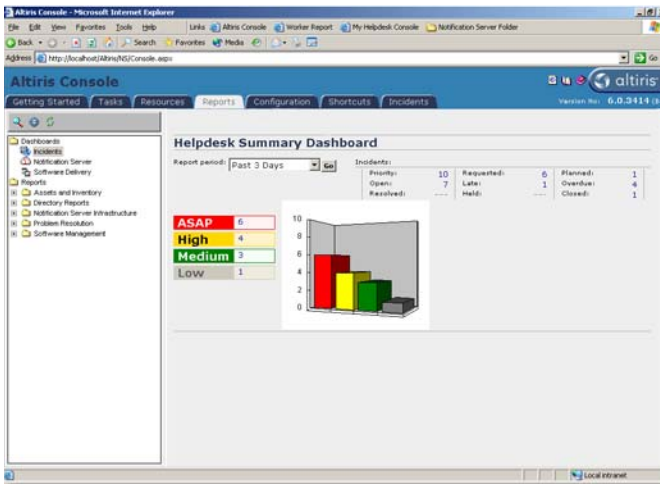
Organizations are placing increasing emphasis on automated patch management as the number of worms, viruses, and trojan horses continues to increase in today's computing environment. The number of patches required makes it difficult for your IT staff to identify and understand which patches need to be applied and how those required updates should be prioritized. Client Management Suite eliminates the manual process of gathering the data by automatically scanning managed computers. A centralized aggregate view of all available patches identifies open vulnerabilities ranked by severity. Once required patches are identified, distribution wizards provide automated package and policy creation for easy and secure distribution of all required patches and updates. Integration with functionality such as dynamic bandwidth throttling and checkpoint restart allows you to "drizzle" packages to LAN-based as well as remote and mobile users regardless of connectivity limitations. Altiris patch management capability also seamlessly

integrates with Altiris® Recovery Solution™ for stable-state roll back in the event an applied patch causes system instabilities. By integrating automated patch management with recovery capabilities, Altiris® Patch Management Solution™ improves business continuity and accelerates IT systems security by reducing the need for extended patch test cycles.

EXTENSIBLE MANAGEMENT ARCHITECTURE

Client Management Suite is built on the Altiris Extensible Management Architecture™ (EMA™), which allows for a maturity model implementation strategy. The suite is organized in multiple levels of systems management, allowing your company to employ additional functionality as requirements increase and additional systems management demands are placed on your organization. Client Management Suite can grow with your organization providing the exact level of functionality required at all times to help IT become a driving force within your company. Level 1 addresses the

essential elements your environment needs for baseline configuration management of all clients; level 2 functionality provides more proactive problem resolution capabilities; and level 3 introduces business continuity elements into your management strategy for continual backup and recovery and system efficiency.



Dashboards allow you to quickly and easily check real-time status of tasks, clients, and your environment.

SYSTEM REQUIREMENTS

Client Management Suite requires that you install and configure the Altiris Notification Server™.

Notification Server Minimum Requirements

- > Processor—Pentium® III 800 MHz or faster
- > Memory—1 GB RAM
- > Hard drive—20 GB
- > Operating system—Windows® Server 2003 or Windows 2000 Server
- > Database—Microsoft® SQL Server 2000 SP3
- > Browser—Microsoft Internet Explorer 6 or later

Altiris Agent Minimum Requirements

- > Operating system—Windows 95 or later
- > Available disk space—5 MB disk space for Altiris Agent, plus space to install required software
- > Memory—64 MB RAM
- > Browser—Microsoft Internet Explorer 4 or later

TRY CLIENT MANAGEMENT SUITE FOR FREE!

Get your 30-day, fully-functional evaluation copy of Client Management Suite at www.altiris.com/eval.

