



Altiris® 6

# Deployment Solution™

.....  
 REDUCE THE TIME AND COST OF DEPLOYING AND MANAGING IT DEVICES

## BENEFITS

- > Single deployment solution for desktops, servers, notebooks, and handhelds
- > Supports Intel's Wired for Management specifications for PXE, Wake on LAN, and BIS
- > Secures management features from unauthorized personnel
- > Supports Windows PE and Linux pre-boot environments
- > Provides tools for hands-free migration, which increases return on investment
- > Supports heterogeneous operating systems, including Windows, Linux, and Pocket PC

Altiris® Deployment Solution™ helps reduce the cost of deploying and managing servers, desktops, notebooks, thin clients, and handheld devices from a centralized location in your environment with an easy-to-use, automated solution that offers OS deployment, configuration, PC “personality” migration, and software deployment across hardware platforms and OS types.

## HANDS-OFF DESKTOP AND SERVER DEPLOYMENT

Deployment Solution makes it easy to deploy your desktops and servers. For example, you can build a reference system using Altiris' unattended OS installation wizard. Once your reference system has been built with your standard OS and applications, you can mass-deploy an image of the reference system to your new and existing systems. Because every system is unique, you can assign security IDs (SIDs) and configure user names, IP addresses, and other network settings. In addition to supporting a wide variety of hardware types, Deployment Solution also supports multiple operating systems, including Windows, Linux, Solaris, and CE .NET. Deploying servers, desktops, notebooks, and thin clients has never been easier.

## EASY-TO-USE MANAGEMENT CONSOLE

With Deployment Solution, you don't have to leave your desk to manage your systems. Use Deployment Solution's wizards to help you build events to perform common computer management tasks—simply drag an event onto a computer or group of computers, and then run it immediately or schedule it for after-hours. It's that easy. In addition, the improved Web console allows you to install local or remote Deployment Servers and manage them from a single location. The console includes improved image and event replication; support for adding, modifying, and deleting computers, jobs, and tasks; and support for managing virtual computers. It's also easy to restrict access to the console functions and managed systems with Altiris' role-and-scope-based security, so authorized staff can access and manage appropriate systems.

## SIMPLIFIED SOFTWARE MANAGEMENT

OS deployment is only part of the battle. Once a computer or server is provisioned, you also need to deploy drivers and software updates. Deployment Solution allows you to easily install

and configure department-specific software, and migrate user-specific data and settings to new computers. The solution makes it faster and easier than ever to deploy, configure, and upgrade software on managed devices.

## MIGRATE DATA AND SETTINGS

Migrating data and settings from an old computer to a new one has always been a frustrating task. Deployment Solution simplifies the migration process by offering industry-leading migration technology that guides you as you capture desktop, network, and application settings, along with user data. It then packages the data in a self-extracting file for easy redeployment on a new computer or operating system.

## QUICK RESPONSE TO HELP DESK REQUESTS

Frantic help desk calls are an unavoidable part of running a network. Use Deployment Solution to remotely browse, diagnose, and repair problems on systems—without ever leaving your desk. Detailed computer properties, along with remote control and chat, help simplify remote diagnosis of common problems. In addition, if a system crashes, you can quickly restore the device system to an operational state using images and software distribution tasks.

## POWERFUL TASK MANAGEMENT

Deployment Solution enables power users to perform advanced automation and customized scripting. Whether it's support for server-side scripting or conditional error handling, Deployment Solution provides unparalleled job and task management.



altiris®  
 intuitive > manageability

.....  
[www.altiris.com](http://www.altiris.com)

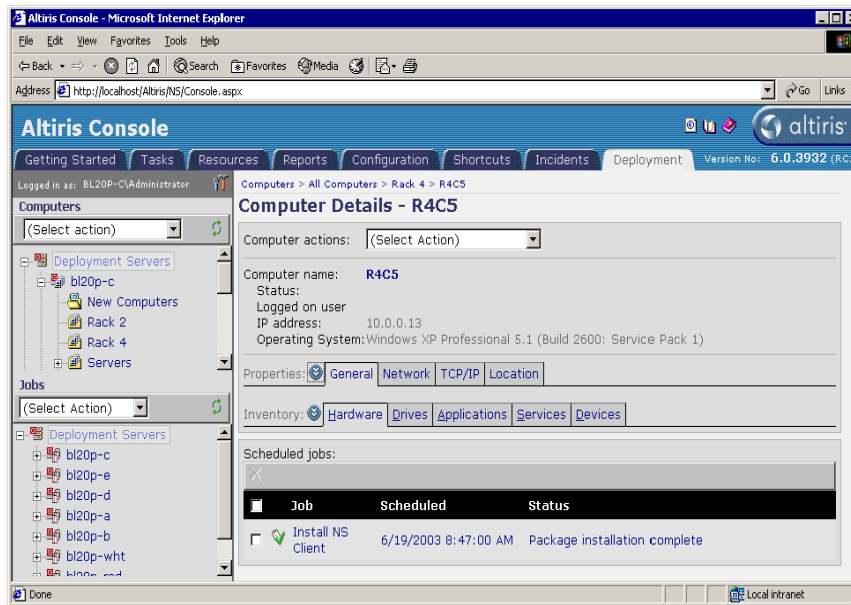
“We used to go to each end user’s station to update software. What used to take four hours and 15 people now requires just a click of the mouse. Now we don’t even have to stay up late to do software upgrades.”

—TONY BURDICK  
Partner  
William Blair & Co.  
Investment Bank

“Deployment time for new computers has been reduced from about half a day to under one hour with Altiris Deployment Solution.”

—PAUL JOSEPH  
IT Manager

RSM Bird Cameron  
(One of the largest accounting and business advisory firms in Australia)



This view of the Altiris Console shows specific computers and the status of packages that are scheduled to be installed.



**SYSTEM REQUIREMENTS**

Deployment Solution requires that you install and configure the Altiris Notification Server™.

*Notification Server Minimum Requirements*

- > Processor—Pentium III 800 MHz or faster
- > Memory—1 GB RAM
- > Hard drive—20 GB
- > Operating system—Windows Server 2003 or Windows 2000 Server
- > Database—Microsoft SQL Server 2000 SP3
- > Browser—Microsoft Internet Explorer 6 or later

*Altiris Agent Minimum Requirements*

- > Operating system—Windows 95 or later
- > Available disk space—5 MB disk space for Altiris Agent, plus space to install required software
- > Memory—128 MB RAM; 384 MB RAM minimum if using Windows PE
- > Browser—Microsoft Internet Explorer 6 or later

**TRY DEPLOYMENT SOLUTION FREE FOR 30 DAYS!**

Get your free 30-day, fully-functional evaluation copy of Deployment Solution at [www.altiris.com/eval](http://www.altiris.com/eval).

