



**ALTIRIS<sup>®</sup>**  
**CONNECTOR 6.0 FOR HP**  
**SYSTEMS INSIGHT**  
**MANAGER**  
**PRODUCT GUIDE**



altiris<sup>®</sup>

# Notice

---

Copyright © 1998-2004 Altiris Inc. All rights reserved.

Product Version: 6.0

Document Date: June 11, 2004

Bootworks U.S. Patent No. 5,764,593.

RapiDeploy U.S. Patent No. 6,144,992.

Due to the inherently complex nature of computer software, Altiris does not warrant that the Altiris software is error-free, will operate without interruption, is compatible with all equipment and software configurations, or will otherwise meet your needs.

The content of this documentation is furnished for informational use only, is subject to change without notice, and should not be construed as a commitment by Altiris. Altiris Inc. assumes no responsibility or liability for any errors or inaccuracies that may appear in this documentation. For the latest documentation, visit our Web site at [www.altiris.com](http://www.altiris.com).

Altiris, the Altiris logo, BootWorks, Inventory Solution, LabExpert, PC Transplant, RapiDeploy, and RapidInstall are registered trademarks of Altiris, Inc. in the United States.

Carbon Copy is a registered trademark licensed to Altiris, Inc. in the United States and a trademark of Altiris, Inc. in other countries.

Altiris eXpress, Altiris Vision, Application Management Solution, Application Metering Solution, Asset Control Solution, Asset Management Suite, Client Management Suite, Compliance Toolkit, Conflict Analysis Solution, Contract Management Solution, Deployment Server, Deployment Solution, Education Management Suite, Helpdesk, Helpdesk Solution, HP Client Manager Software, Lab Management Suite, Migration Toolkit, Mobile Client for SMS, My IT Forum, Notification Server, Problem Management Suite, Server Management Suite, Server Monitor Solution, Site Monitor Solution, Software Delivery Solution, TCO Management Solution, Unix Client for SMS, Unix Inventory Solution, Unix Software Deliver Solution, Web Admin for SMS, Web Reports and other product names are trademarks of Altiris, Inc. in the United States and other countries.

Microsoft, Windows, and the Windows logo are trademarks, or registered trademarks of Microsoft Corporation in the United States and/or other countries.

HP is a registered trademark of the Hewlett-Packard Corporation.

Compaq is a registered trademark of the Hewlett-Packard Corporation.

Macintosh is a registered trademark of the Apple Computer Corporation.

All other brand names are trademarks or registered trademarks of their respective companies.

# Contents

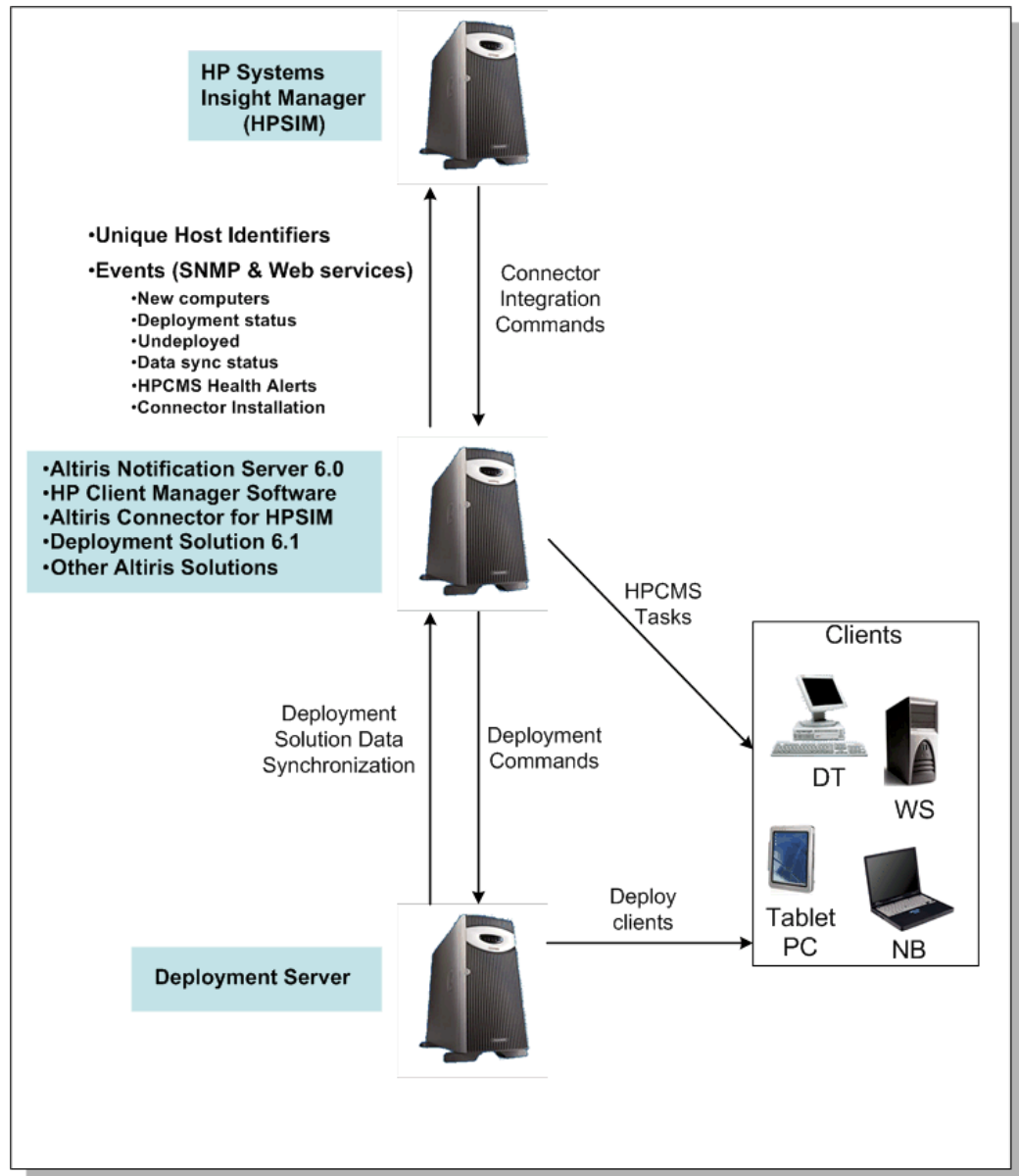
---

- Notice** ..... **2**
- Introduction** ..... **4**
- Installation and Configuration** ..... **7**
  - Installing the Connector for HP Systems Insight Manager ..... 7
  - Configuring the Connector to Integrate with HP Systems Insight Manager ..... 8
  - Uninstalling the Connector for HP Systems Insight Manager ..... 9
  - Registration ..... 9
- Using the Connector for HP Systems Insight Manager** ..... **10**
  - User Interface ..... 10
    - Configuration Tab View ..... 10
      - Connector Configuration Page ..... 10
      - Notification Policies ..... 15
  - Using Integrated Functions from within HP Systems Insight Manager ..... 16
  - Viewing Notification Server Events in HP Systems Insight Manager ..... 19
  - Viewing Altiris Inventory Data in HP Systems Insight Manager ..... 20
  - Using with Deployment Solution ..... 20
- Index** ..... **22**

# Introduction

The Altiris Connector for HP Systems Insight Manager allows IT professionals to consolidate deployment and management of HP clients and servers within a single HP Systems Insight Manager console. The Connector extends HP Systems Insight Manager core functionality with client deployment, HP client hardware management, and access to additional Altiris lifecycle management functionality.

The Connector for HP Systems Insight Manager provides integration between HP Systems Insight Manager and selected Altiris solutions, including HP Client Manager Software and Altiris Deployment Solution. The Altiris Connector for HP Systems Insight Manager integrates Altiris functions into the HP Systems Insight Manager user interface, providing you a consistent experience when executing HP management tasks.



The Connector for HP Systems Insight Manager integrates with the following Altiris products:

- Altiris HP Client Manager Software 6.0
- Altiris Deployment Solution 6.1

- Altiris Software Delivery Solution 6.0
- Altiris Notification Server 6.0 (which includes the Altiris Console)

The Connector for HP Systems Insight Manager works in conjunction with the Altiris Notification Server, which provides you with a complete solution to manage your computers. The Connector for HP Systems Insight Manager lets you integrate Altiris integrated functions in HP Systems Insight Manager, perform data synchronization with HP Systems Insight Manager, and configure SNMP management to forward events to HP Systems Insight Manager. When you run an Altiris tool from HP Systems Insight Manager menus, a collection of computers can be sent back to Notification Server, allowing you to perform actions such as deploying computers in that collection (shown by the **Connector Integration Commands** arrow in the graphic above).

HP Client Manager Software is a free hardware management tool for HP client computers that provides in-depth client information, driver and utility updating, support for changing BIOS settings, and automatic health monitoring. HP Client Manager Software integrates with the Altiris management infrastructure, HP OpenView, and Microsoft Systems Management Server (SMS). For more information, see *Altiris HP Client Manager Software User Guide*.

If you purchase Altiris Deployment Solution, you can set up a computer as a Deployment Server to deploy clients. For more information, see the *Altiris Deployment Solution Product Guide*.

The Connector for HP Systems Insight Manager lets you consolidate systems management across your HP environment by letting you perform these IT functions using the HP Systems Insight Manager console and Altiris software.

- Manage your HP client hardware through integration between HP Client Manager Software and HP Systems Insight Manager.
- Deploy clients through an integrated deployment wizard.
- Keep your HP client system software up-to-date with an integrated SoftPaq Delivery Wizard.
- Remotely troubleshoot your HP clients and view HP client diagnostic reports.
- Change BIOS settings on groups of computers without having to visit each one using an automated wizard.
- Find out details about what HP client hardware you have by viewing detailed inventory reports and data.
- Access complete IT lifecycle management tasks through menu links to the Altiris Console.

The Connector for HP Systems Insight Manager provides integrated functionality from within the HP Systems Insight Manager console for the following Altiris products:

- **Deployment Solution** - After the Deployment Solution is installed, Deployment menu items are made available within HP Systems Insight Manager. These menu items let you do the following from within HP Systems Insight Manager:
  - Select and deploy heterogeneous clients using Deployment Solution 6.1.
  - View status of client deployments.
- **HP Client Manager Software** - After the HP Client Manager Software is installed, HP Client Manager menu items are made available within HP Systems Insight Manager. These menu items let you do the following from within HP Systems Insight Manager:
  - View detail hardware inventory information for HP clients computers.
  - Distribute SoftPaqs to HP client computers.
  - Change BIOS settings of selected HP client computers
  - View HP client diagnostics reports.
  - Access HP Client Manager Software QuickStart page.
- **Notification Server and Software Delivery Solution** - You can do the following from within HP Systems Insight Manager:
  - Access the Altiris console via menu options to perform additional IT lifecycle management (Notification Server).

- Access the Altiris Resource Manager to view comprehensive inventory on a specific computer (Notification Server).

Hardware and software basic inventory is available with Notification Server. Comprehensive hardware and software inventory can be accessed if Altiris Inventory Solution is installed.

- Deploy software using the Altiris Software Distribution Wizard (requires Altiris Software Delivery Solution).

**Note:** Additional Altiris menu items can be created to fit your needs through the use of XML files.

**See Also**

- [“Installation and Configuration” on page 7](#)
- [“Using the Connector for HP Systems Insight Manager” on page 10](#)

# Installation and Configuration

This section provides you with information on installation and configuration.

## Quick Links

- [“Installing the Connector for HP Systems Insight Manager” on page 7](#)
- [“Configuring the Connector to Integrate with HP Systems Insight Manager” on page 8](#)
- [“Uninstalling the Connector for HP Systems Insight Manager” on page 9](#)
- [“Registration” on page 9](#)

## Installing the Connector for HP Systems Insight Manager

The following lists the prerequisites and steps for installing and using the Connector for HP Systems Insight Manager.

### Prerequisites

- Altiris Notification Server 6.0 (which includes the Altiris Console) must be installed on the computer you are installing the Connector for HP Systems Insight Manager on. For information on installing Notification Server, see the *Altiris Notification Server Help*.

**CAUTION:** Because both HP Systems Insight Manager and SNMP Management (which is installed as a component of the Altiris Connector for HP Systems Insight Manager on Notification Server) have SNMP listeners, port conflicts arise if both are installed on the same computer. Therefore, we recommend that you do not install Notification Server on the same computer as HP Systems Insight Manager. Altiris does not support installations of SNMP Management and HP Systems Insight Manager on the same computer.

- The Notification Server computer on which this Connector is installed must have network access to an HP Systems Insight Manager server (version 4.0 or 4.1).
- Altiris Context Factory must be installed on your Notification Server. However, Altiris Context Factory gets installed automatically when you install the Connector through the Solution Center.

**Note:** Altiris Context Factory is a prerequisite for Altiris HP Client Manager Software 6.0. Therefore, if you have already installed Altiris HP Client Manager Software 6.0, Altiris Context Factory should be installed also.

- Altiris SNMP Management must be installed on your Notification Server. However, Altiris SNMP Management gets installed automatically when you install the Connector through the Solution Center.

**Note:** Altiris SNMP Management is a prerequisite for Altiris HP Client Manager Software 6.0. Therefore, if you have already installed Altiris HP Client Manager Software 6.0, Altiris SNMP Management should be installed also.

- If you plan on integrating with Altiris solutions, the following versions are required and should be installed before you install the Connector for HP Systems Insight Manager:

- Altiris HP Client Manager Software 6.0
- Altiris Deployment Solution 6.1

This should be installed and communication should be established between the Deployment database and the Notification database before you install the Connector. See [“Using with Deployment Solution” on page 20](#).

- Altiris Software Delivery Solution 6.0

### To Install the Connector for HP Systems Insight Manager

- 1 Click **Start > Programs > Altiris > Altiris Console**.

This starts the Altiris Console.

- 2 In the Altiris Console, click the **Getting Started** tab.

- 3 Click the **Install Altiris Solutions from the Solutions Center** link.
- 4 Click the **Segments** button.
- 5 Expand the **Partner Solutions** or **Connectors** group.
- 6 Click **Altiris Connector for HP Systems Insight Manager**.
- 7 Click **Start**.

## Configuring the Connector to Integrate with HP Systems Insight Manager

This section walks you through the steps needed to integrate the Connector for HP Systems Insight Manager with your HP Systems Insight Manager server. These steps assume you have installed the Connector for HP Systems Insight Manager and have an HP Systems Insight Manager server.

- 1 Click **Start > Programs > Altiris > Altiris Console**.  
This starts the Altiris Console.
- 2 In the Altiris Console, click the **Configuration** tab.
- 3 In the treeview pane, navigate to **Configuration > Solutions Settings > Connectors > HP Systems Insight Manager**.
- 4 In the treeview pane, click on **Connector Configuration**.
- 5 In the content pane, in the **User** field, enter the user name for logging onto the HP Systems Insight Manager server.
- 6 In the **Password** field, enter the password for logging onto the HP Systems Insight Manager server.
- 7 In the **Host name** field, enter the host name of the HP Systems Insight Manager server.
  - If you select Secure SSL for **Port**, the **Host name** must match exactly the host name that comes from the SSL certificate. You can view the certificate in HP Systems Insight Manager via **Options > Security > Certificates > Server Certificate**.
  - If you select Unsecured HTTP for **Port**, the **Host name** can be either the FQDN or the name of the HP Systems Insight Manager server.
- 8 Select one or more Altiris menu items to enable in HP Systems Insight Manager.
- 9 If you want to share inventory data right away, click the **Perform Full Sync Now** button. Clicking this button launches a Notification Policy which synchronizes the inventory data as soon as possible. For more information, see [“Connector Configuration Page” on page 10](#).  
**Note:** When you click this button, the Connector attempts to register with HP Systems Insight Manager if it has not been registered yet or if the User/Password/Hostname fields have been changed since the last register.  
**Note:** This button launches a Notification Policy, which is not a real-time event. It may take a few minutes (depending on your Notification Server settings) after pressing this button before computers show up in HP Systems Insight Manager.
- 10 If you want to set up SNMP Automated Actions, click the **Configure SNMP Automated Actions** button. This creates SNMP Automated Actions that can be sent to your HP Systems Insight Manager server. For more information, see [“Connector Configuration Page” on page 10](#).
- 11 Click **Apply** to save and apply your changes.

If you entered the correct credentials, the Altiris menu items you selected will be configured into HP Systems Insight Manager.

Every time you want to synchronize inventory data between Notification Server and HP Systems Insight Manager, you must click the **Perform Full Sync Now** button.

# Uninstalling the Connector for HP Systems Insight Manager

## To uninstall the Connector for HP Systems Insight Manager

- 1 Open **Add/Remove Programs** from the Control Panel.
- 2 Remove **Altiris Connector for HP Systems Insight Manager**.

## Registration

Each Altiris product comes with a 7-day trial license that is installed by default. The Connector for HP Systems Insight Manager is a free product, but it must be registered and a license obtained through our Web site at [www.altiris.com](http://www.altiris.com).

To view your current license, open the Altiris Console, click the **Configuration** tab, and select **Licensing**.

For more information, see “Licensing Altiris Software” in the *Altiris Getting Started Guide* on the product CD or on our Web site at [www.altiris.com/support/documentation](http://www.altiris.com/support/documentation).

# Using the Connector for HP Systems Insight Manager

---

This section provides tasks and topics to help you use the Connector for HP Systems Insight Manager.

## Quick Links

- [“User Interface” on page 10](#)
- [“Using Integrated Functions from within HP Systems Insight Manager” on page 16](#)
- [“Viewing Notification Server Events in HP Systems Insight Manager” on page 19](#)
- [“Viewing Altiris Inventory Data in HP Systems Insight Manager” on page 20](#)
- [“Using with Deployment Solution” on page 20](#)

## User Interface

When the Connector for HP Systems Insight Manager is installed, folders and items are placed in **Configuration** tab view of the Altiris Console. All folders and items needed for the Connector for HP Systems Insight Manager are placed in the **Connectors** folder in the treeview pane of the **Configuration** tab view.

## Quick Link

- [“Configuration Tab View” on page 10](#)

## Configuration Tab View

The Connector for HP Systems Insight Manager places several configuration items in the **Configuration** tab view. These items let you configure the Connector for HP Systems Insight Manager to meet your needs.

These configuration items can be found by clicking on the **Configuration** tab, and then navigating to **Configuration > Solutions Settings > Connectors > HP Systems Insight Manager** in the treeview pane.

## Quick Links

- [“Connector Configuration Page” on page 10](#)
- [“Notification Policies” on page 15](#)

## Connector Configuration Page

This page lets you configure Altiris menu items in the HP Systems Insight Manager console, perform data synchronization with HP Systems Insight Manager, and configure SNMP management.

When you have made the desired changes to this page, click **Apply** to save your changes. This registers the Connector with HP Systems Insight Manager based on your settings.

### ***HP Systems Insight Manager Server Connection Settings***

In this section, you enter the information for logging onto the server on which HP Systems Insight Manager is installed.

The information in this section needs to be entered accurately in order for the Connector for HP Systems Insight Manager to work with HP Systems Insight Manager.

**Page Items**

<b>Item</b>	<b>Description</b>
User	The user name for logging onto the server.
Password/Confirm	The password for the user name.
Host name	The host name of the HP Systems Insight Manager server. See <b>Port</b> for an understanding of the host name format.
Port	Select either Secure SSL or Unsecured HTTP. If you are using Secure SSL, the <b>Host name</b> must match exactly the host name that comes from the certificate. The certificate is sent to the Connector automatically from HP Systems Insight Manager. The host name on the certificate is the FQDN of the HP Systems Insight Manager server. If you are using Unsecured HTTP, the <b>Host name</b> can be either the FQDN or the name of the server. For example, if the FQDN of your HP Systems Insight Manager server is puppy.acme.com, and you are using Unsecured HTTP, you can enter either puppy.acme.com or puppy for the <b>Host name</b> .

You have the option of using an SSL or an HTTP connection between the Notification Server computer and the HP Systems Insight Manager server.

An SSL connection requires a certificate from HP Systems Insight Manager. HP Systems Insight Manager automatically passes the certificate to the Connector (and the Connector accepts the certificate) each time that they communicate.

**HP Systems Insight Manager Menu Item Selection**

The Menu Item Selection list displays Altiris menu items that you can choose to have displayed in HP Systems Insight Manager. Each Altiris menu item lets you launch a Notification Server or Altiris solution page inside HP Systems Insight Manager. These menu items provide Altiris functionality within HP Systems Insight Manager.

To choose an Altiris menu item to have displayed in HP Systems Insight Manager, select it from the list of items.

**Note:** When you hover the mouse pointer over an Altiris menu item, you see the menu path location where it will be accessible in HP Systems Insight Manager.

If you remove an Altiris solution, any associated Altiris menu items still appear in HP Systems Insight Manager. To remove any Altiris menu items associated with the removed solution, you need to re-register the Connector with HP Systems Insight Manager by entering the Connection Settings and either clicking the **Apply** button or the **Perform Full Sync Now** button.

**Altiris Connector for HP Systems Insight Manager Menu Mapping**

<b>Menu and System Lists View - location in HP SIM menus</b>	<b>Name - Menu display</b>	<b>Solution and Component Launched</b>
<b>HP Client Manager Software</b>		
Tools   Integrated Consoles	HP Client Manager Console	HP Client Manager Software QuickStart Console
Deploy   Deploy Drivers, Firmware and Agents	Update Client Drivers and Firmware	HP Client Manager Software - SoftPaq Delivery Wizard
Configure	Update Client BIOS Settings	HP Client Manager Software - BIOS Administration Wizard
Tools   System Information	Windows Client Inventory	HP Client Manager Software - Client inventory report

**Altiris Connector for HP Systems Insight Manager Menu Mapping**

<b>Menu and System Lists View - location in HP SIM menus</b>	<b>Name - Menu display</b>	<b>Solution and Component Launched</b>
Tools   System Information	Windows Client Diagnostics	HP Client Manager Software - View diagnostics report
<b>Client Deployment and Management</b>		
Deploy   Deploy Windows Clients	Deploy Windows Client Image	Deployment Solution - Windows Client Image Deployment Wizard
Deploy   Deploy Windows Clients	Update Client Software Image	Deployment Solution - Windows Client Image Deployment Wizard
Deploy   Software Distribution	Client Software Delivery	Software Delivery for Clients - Software Delivery Wizard
System Lists View   System Lists   Undeployed Systems	Undeployed Client List	Deployment Solution - Undeployed clients identified and forwarded
System Lists View   Event Lists   Deployment Events	<ul style="list-style-type: none"> <li>• All Deployment Events</li> <li>• Start Events</li> <li>• New Computers</li> <li>• Completion Events</li> </ul>	Deployment Solution - Events generated during the deployment process
System Lists View   Event Lists	<ul style="list-style-type: none"> <li>• Client Hardware Events</li> </ul>	HP Client Manager Software - Lists client hardware monitoring events forwarded to HP Systems Insight Manager
<b>General and Other - May apply to multiple categories</b>		
Tools   System Information	Altiris Resource Manager	Altiris Notification Server - Altiris Resource Manager
Tools   Integrated Consoles	Altiris Console	Altiris Notification Server - Altiris Console
Logs	Altiris Log	Altiris Notification Server - Altiris Notification Server Log
Configure	Altiris Connector Configuration	Altiris Connector for HP Systems Insight Manager - Configuration Page
Tools   Integrated Consoles	Altiris Deployment Console	Altiris Deployment Solution - Altiris Deployment Solution Console

**To display one or more of these Altiris menu items in HP Systems Insight Manager**

- 1 Enter all information in the **HP Systems Insight Manager Server Connection Settings** section.
- 2 Select one or more Altiris menu items in the **HP Systems Insight Manager Menu Item Selection** section.
- 3 Click the **Apply** button.

If the credentials are correct, the Altiris menu items are immediately sent to HP Systems Insight Manager and placed in its menu. An **Altiris** menu item appears in HP Systems Insight Manager.

### To delete a menu item from HP Systems Insight Manager

- 1 Clear the tool from the menu item list.
- 2 Click the **Apply** button.

The Altiris menu item will then be deleted from HP Systems Insight Manager.

On installation, a tools.xml file is placed in the *install path*\Altiris\ConnectHPSIM\Nimbus Tools folder (by default). This file contains a list of Altiris menu items that will be displayed in the Menu Item Selection list depending on whether or not the corresponding URL listed in the file can be accessed. The appropriate Altiris Solution needs to be installed onto the Notification Server before the corresponding URL can be accessed.

For example, one of the Altiris menu items listed in the tools.xml file is the Software Delivery Wizard, which lets you create packages and Software Delivery tasks. If you do not have Software Delivery Solution for Windows installed, the **Software Delivery Wizard** menu item will not be displayed in the Menu Item Selection list.

You can add to the Menu Item Selection list by adding one or more XML files to the Nimbus Tools folder. See the tools.xml file for proper formatting.

## Data Synchronization

### Page Item

Item	Description
Perform Full Sync Now	<p>When you click this button, inventory gets sent from Notification Server to HP Systems Insight Manager. This is a one way synchronization from Notification Server to HP Systems Insight Manager. Enough inventory data for each computer in Notification Server gets sent so that the computer is fully represented in HP Systems Insight Manager.</p> <p>This inventory gets synchronized with the inventory already in HP Systems Insight Manager and can be used the same as that inventory. The Altiris integrated functions that get placed in HP Systems Insight Manager can use this inventory for performing their designated tasks (see <a href="#">“Viewing Altiris Inventory Data in HP Systems Insight Manager”</a> on page 20).</p> <p>There are two ways to perform a full synchronization:</p> <ul style="list-style-type: none"> <li>• Click this button, which launches the <b>Sync All Managed Computers</b> Notification Policy.</li> <li>• Manually enable the <b>Sync All Managed Computers</b> Notification Policy.</li> </ul> <p>We recommend that you perform a full synchronization soon after this Connector gets installed. Then, depending on your needs, you should periodically perform a full synchronization. This will ensure that all computers found in Notification Server will also be found in HP Systems Insight Manager.</p> <p>When you click this button, the Connector attempts to register with HP Systems Insight Manager if it has not been registered yet or if the Connection Settings have been changed since the last register.</p> <p>So, you should click this button when you want to perform a full synchronization and the Connector has not registered with HP Systems Insight Manager or the information for HP Systems Insight Manager has changed. If the information for HP Systems Insight Manager has not changed, and you want to set up the full synchronization on a schedule, we recommend that you manually enable the <b>Sync All Managed Computers</b> Notification Policy.</p> <p><b>Note:</b> This button launches the <b>Sync All Managed Computers</b> Notification Policy, which is not a real-time event. It may take a few minutes (depending on your Notification Server settings) after pressing this button before computers show up in HP Systems Insight Manager.</p> <p><b>Example 1:</b> Suppose you want to deploy HP clients using Altiris Deployment Solution. Clicking the <b>Perform Full Sync Now</b> button sends inventory collected by Notification Server to the HP Systems Insight Manager server. If you have selected the Deployment Solution Wizard to be placed as a menu item in HP Systems Insight Manager, you can select a group of HP clients in HP Systems Insight Manager and use the Deployment Solution Wizard to deploy to those clients.</p> <p><b>Example 2:</b> Suppose you have a wizard that runs a report on a group of computers. You then create a tool that creates a collection of computers and passes this collection to the wizard. You then create a tools file containing this URL and place it in the <i>install path</i> \Altiris\ConnectHPSIM\Nimbus Tools folder. When this new tool appears on the Menu Item Selection list, you can select it, and then click the <b>Apply</b> button. This tool menu item will then be sent to HP Systems Insight Manager. In HP Systems Insight Manager, you can then select a group of computers and run this wizard to see a report on the computers you selected.</p>

## SNMP Management

### Page Item

Item	Description
Configure SNMP Automated Actions	<p>This button adds the HP Systems Insight Manager server to the <b>HP Systems Insight Manager</b> collection found in the SNMP Destinations Collection folder (found in the <b>Configuration</b> tab view under <b>Configuration &gt; Server Settings &gt; Notification Server Settings &gt; SNMP Management</b>).</p> <p>SNMP Automated Actions are then created for the <b>HP Systems Insight Manager</b> SNMP Destination. The <b>SNMP Destinations Configuration</b> page is then opened and displays the SNMP Automated Actions that were created. You can then enable the actions you want to use. For more information on Altiris SNMP Management, see <i>Altiris SNMP Management Help</i>.</p> <p>SNMP Management lets you send useful events from Notification Server to HP Systems Insight Manager.</p> <p>For example, you can send specific events from Notification Server that can be used by HP Systems Insight Manager Health Alerts.</p> <p>If you have HP Client Manager Software installed, you can also forward HP Client Manager Software hardware alerts to HP Systems Insight Manager. These hardware alerts are: battery failure, chassis intrusion, chassis thermal status, CPU error, disk drive status, and memory module error.</p> <p>For more information on configuring SNMP Automated Actions, see <a href="#">“Viewing Notification Server Events in HP Systems Insight Manager” on page 19</a>.</p> <p><b>Note:</b> This button requires that the Connector be registered with HP Systems Insight Manager. This registration happens when you enter the Connection Settings and either click the <b>Apply</b> button or the <b>Perform Full Sync Now</b> button.</p> <p><b>Note:</b> The Connector will not be able to add the HP Systems Insight Manager server to the <b>HP Systems Insight Manager</b> collection until the server is registered in the Notification Database. You can register the server in the database by deploying the Altiris Agent to the HP Systems Insight Manager server, by manually gathering inventory from it, or by manually adding it as a resource. For more information on deploying the Altiris Agent, see <i>Altiris Notification Server Help</i>.</p> <p>To add the HP Systems Insight Manager server as a resource:</p> <ol style="list-style-type: none"> <li>1. In the <b>Configuration</b> tab view, from the treeview pane, navigate to <b>Configuration &gt; Server Settings &gt; Discovery Methods &gt; Add Resources</b>.</li> <li>2. In the content pane, select <b>Computer</b> from the drop-down menu and enter the information for the HP Systems Insight Manager server.</li> </ol>

## Notification Policies

The Connector for HP Systems Insight Manager provides several Notification Policies. Three notify HP Systems Insight Manager regarding new computers to deploy and deployment jobs. Two synchronize managed computer information between Notification Server and HP Systems Insight Manager.

By default, these Notification Policies are disabled. They must be enabled in order to use them.

You can edit or clone these Notification Policies to fit your needs. For more information on Notification Policies, see the *Altiris Notification Server Help*.

The following are the provided Notification Policies:

- **Deployment Jobs Which Have Ended** - Enable this policy to notify HP Systems Insight Manager when there are deployment jobs which have ended. You must have Deployment Solution installed and have synchronized data for this policy to be of any value.

- **Deployment Jobs Which Have Started** - Enable this policy to notify HP Systems Insight Manager when there are deployment jobs which have started. You must have Deployment Solution installed and have synchronized data for this policy to be of any value.
- **New Computers to Deploy** - Enable this policy to notify HP Systems Insight Manager when there are new computers to deploy. You must have Deployment Solution installed and have synchronized data for this policy to be of any value.
- **Sync All Managed Computers** - When this policy gets enabled, a start trap gets sent to the HP Systems Insight Manager computer, then a full synchronization gets performed, then an end trap gets sent. This policy gets enabled and disabled automatically when you click the **Perform Full Sync Now** button. You can also manually enable it when you want to set up a schedule to perform a full synchronization.
- **Sync New Managed Computers** - You can use this policy to synchronize newly found managed computers. This policy can be enabled and scheduled to run as often as you like. We recommend that you set the schedule for this policy to run more often than the **Sync All Managed Computers** policy. Then, periodically run the **Sync All Managed Computers** policy to make sure data has been sent for all computers.

#### To enable one of these policies

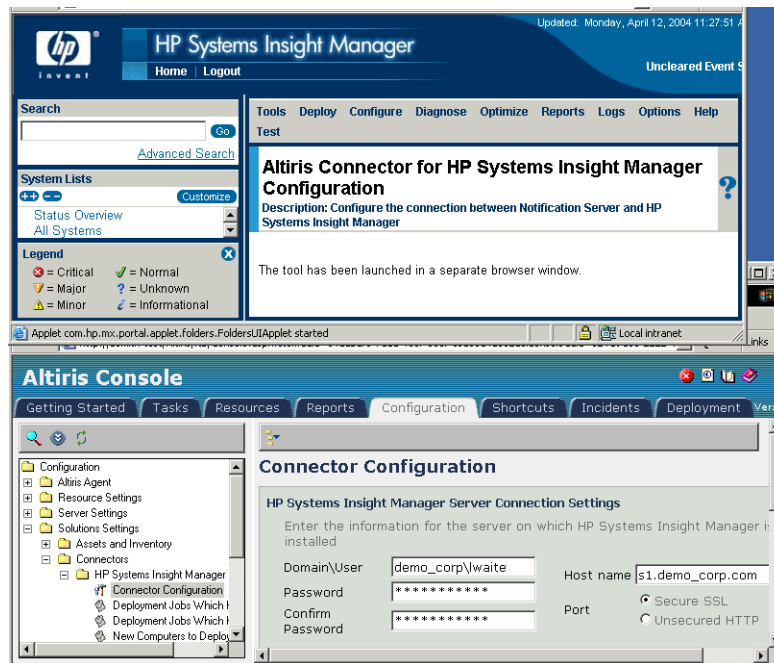
- 1 In the Altiris Console, click the **Configuration** tab.
- 2 In the treeview pane, navigate to **Configuration > Solution Settings > Connectors > HP Systems Insight Manager**.
- 3 Click on a Notification Policy.
- 4 In the content pane, select the **Enable** checkbox.
- 5 Click the **Apply** button.

## Using Integrated Functions from within HP Systems Insight Manager

The Connector for HP Systems Insight Manager lets you integrate Altiris products and solutions with HP Systems Insight Manager. This section shows you the types of integration and helps you understand how this integration works within HP Systems Insight Manager. A screen shot example is given for each type of integration.

## Types of Integration

- Launch an Altiris console



- Altiris Connector Configuration
- Altiris Console
- Altiris Deployment Console
- Altiris Resource Manager
- HP Client Manager Console
- Display integrated function (select computers in HP Systems Insight Manager and perform the function).
  - Update Client Drivers and Firmware
  - Update Client SoftPaqs
  - Windows Client Inventory
  - Windows Client Diagnostics
  - Client Software Delivery
  - Deploy Client Software
  - Update Client Software Image
  - Deploy Windows Client Image
- Display integrated function (no selection needed)
  - Altiris Log
  - Altiris Reports

### Example - Launch an Altiris Console

This example shows you how to integrate and use the Altiris Console within HP Systems Insight Manager.

- 1 Configure the Connector to add the Altiris Console menu integration into HP Systems Insight Manager.
  - a Click **Start > Programs > Altiris > Altiris Console**.  
This starts the Altiris Console.

- b In the Altiris Console, click the **Configuration** tab.
  - c In the treeview pane, navigate to **Configuration > Solutions Settings > Connectors > HP Systems Insight Manager**.
  - d In the treeview pane, click on **Connector Configuration**.
  - e In the content pane, enter the credentials for logging onto the HP Systems Insight Manager server.
  - f Select **Altiris Console** to send to the HP Systems Insight Manager server.
  - g Click **Apply** to save and apply your changes.
- 2 Select the Altiris Console in HP Systems Insight Manager.
    - In the menu, select **Tools > Integrated Consoles > Altiris Console**.

The Altiris Console launches in a new window and opens on the **Getting Started** tab view. You can perform any task in the Altiris Console to which you have been given rights.

### **Example - Display integrated function (select computers in HP Systems Insight Manager and perform the function)**

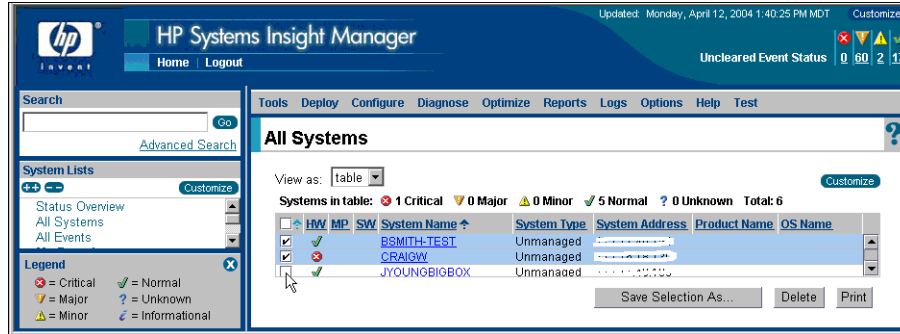
This example shows you how you can deploy clients from the HP Systems Insight Manager console using the Altiris Deployment Solution and inventory from Notification Server.

Before you follow the steps described below, you must have Altiris Deployment Solution installed on your Notification Server and have set up Deployment Server on either your Notification Server computer or another computer.

- 1 Configure the **Deployment Solution Wizard** menu item to appear in HP Systems Insight Manager.
  - a Click **Start > Programs > Altiris > Altiris Console**.

This starts the Altiris Console.
  - b In the Altiris Console, click the **Configuration** tab.
  - c In the treeview pane, navigate to **Configuration > Solutions Settings > Connectors > HP Systems Insight Manager**.
  - d In the treeview pane, click on **Connector Configuration**.
  - e In the content pane, enter the credentials for logging onto the HP Systems Insight Manager server.
  - f Select **Deploy Windows Client Image** to send to the HP Systems Insight Manager server.
  - g To synchronize the Notification Server information with HP Systems Insight Manager, click the **Perform Full Sync Now** button. This lets you select computers in HP Systems Insight Manager that match the information in the Notification Database. Clicking this button performs an inventory data synchronization immediately.
  - h Click **Apply** to save and apply your changes.
- 2 In the HP Systems Insight Manager console, select one or more computers that you want to deploy.
  - a In the System Lists pane, select **All Systems** to see all available systems or navigate through **System Lists** for a more granular view of the systems.

- b In the workspace pane, select the computers you want to deploy.



- 3 In the HP Systems Insight Manager menu, select **Deploy > Deploy Windows Clients > Deploy Windows Client Image**.
- 4 Follow the Deployment Solution Wizard as described in the *Altiris Deployment Solution Product Guide*.

### Example - Display integrated function (no selection needed)

The following example shows you how to integrate and view the Altiris Log within HP Systems Insight Manager.

- 1 Configure the **Altiris Log** menu item to appear in HP Systems Insight Manager.
  - a Click **Start > Programs > Altiris > Altiris Console**.  
This starts the Altiris Console.
  - b In the Altiris Console, click the **Configuration** tab.
  - c In the treeview pane, navigate to **Configuration > Solutions Settings > Connectors > HP Systems Insight Manager**.
  - d In the treeview pane, click on **Connector Configuration**.
  - e In the content pane, enter the credentials for logging onto the HP Systems Insight Manager server.
  - f Select **Altiris Log** to send to the HP Systems Insight Manager server.
  - g Click **Apply** to save and apply your changes.
- 2 In the HP Systems Insight Manager menu, select **Logs > Altiris Log**.
- 3 You can now view the Notification Server log information in a new window.

## Viewing Notification Server Events in HP Systems Insight Manager

The Connector for HP Systems Insight Manager gives you the ability to send events from Notification Server to HP Systems Insight Manager. You can set up Notification Server to notify you in HP Systems Insight Manager when a particular event occurs. These events are controlled by SNMP Automated Actions which are associated with Notification Policies. For more information on Notification Policies and Automated Actions, see *Altiris Notification Server Help*.

When you set up HP Systems Insight Manager, the server it is installed on becomes an SNMP Listener. Through Altiris SNMP Management, you can set up and send SNMP traps (using SNMP Automated Actions) to HP Systems Insight Manager.

Before you can send SNMP Automated Actions to HP Systems Insight Manager, you need to set up the Connector for HP Systems Insight Manager for SNMP Management. For more information on Altiris SNMP Management, see *Altiris SNMP Management Help*.

## To set up Altiris SNMP Management

- 1 Either deploy the Altiris Agent to your HP Systems Insight Manager server or manually gather basic inventory from your HP Systems Insight Manager server. For more information on deploying the Altiris Agent or manually gathering inventory, see *Altiris Notification Server Help*.

**IMPORTANT:** Do not perform the following steps until inventory from the HP Systems Insight Manager server has been received by the Notification Server.

- 2 Open the **Connector Configuration** page.
  - a Click **Start > Programs > Altiris > Altiris Console**.  
This starts the Altiris Console.
  - b In the Altiris Console, click the **Configuration** tab.
  - c In the treeview pane, navigate to **Configuration > Solutions Settings > Connectors > HP Systems Insight Manager**.
  - d In the treeview pane, click on **Connector Configuration**.
- 3 In the content pane, enter the correct information in the Connection Settings section.
- 4 Click the **Configure SNMP Automated Actions** button.  
When you click this button, the following happens:
  - The Altiris MIB and Altiris Custom MIB get downloaded to the HP Systems Insight Manager SNMP Listener.
  - The HP Systems Insight Manager server gets added to the **HP Systems Insight Manager** collection found in the SNMP Destinations Collection folder.
  - SNMP Automated Actions are created for the **HP Systems Insight Manager** SNMP Destination.
  - The **SNMP Destinations Configuration** page is opened and displays the SNMP Automated Actions that were created.
- 5 From the **SNMP Destinations Configuration** page, enable any SNMP Automated Actions that you want to use.
- 6 You can view SNMP Automated Actions in HP Systems Insight Manager by navigating the Event Lists in the System Lists pane.

## Viewing Altiris Inventory Data in HP Systems Insight Manager

The Connector for HP Systems Insight Manager lets you synchronize inventory data collected from Notification Server with HP Systems Insight Manager. The **Connector Configuration** page provides a **Perform Full Sync Now** button that lets you synchronize your Altiris inventory data with the data in HP Systems Insight Manager.

After you click this button, inventory is sent from the Notification Database to HP Systems Insight Manager based on the settings you entered in the **HP Systems Insight Manager Server Connection Settings** section of the **Connector Configuration** page.

After HP Systems Insight Manager receives the inventory data from Notification Server, it adds this data to its database. You can then navigate the System Lists and select any system listed, whether it was added by Notification Server or by some other means.

## Using with Deployment Solution

Before you use the Deployment Wizard in HP Systems Insight Manager, you must have performed the complete set up of Deployment Solution, which includes installing both Notification Server and one or more Deployment Servers.

When you access the Deployment Wizard in HP Systems Insight Manager, the data that it uses is taken directly from the Notification Database. This data gets placed in the Notification Database by your Deployment Server(s). This wizard does not use the data directly from the Deployment Database. When you first install Deployment Solution and one or more Deployment Servers, it takes a while before data is transferred to the Notification Database. Because of this, you need to verify that data has been transferred from your Deployment Server(s) to the Notification Database before you use the Deployment Wizard in HP Systems Insight Manager.

For more information, see “Installing Deployment Solution from the Altiris Console” in the *Altiris Deployment Solution Product Guide*.

# Index

---

- A**
  - altiris menu items 11
  - automated actions 19
- C**
  - configuration 10
  - connection settings 10
  - connector configuration page 10
  - copyright 2
  - creation date of document 2
- D**
  - data synchronization 14
  - deployment solution 20
  - deployment wizard 20
  - document
    - print date 2
- E**
  - events 19
- H**
  - HP Client Manager Software 4
- I**
  - installing 7
    - Connector for HP Systems Insight Manager 7
  - integrating 8
  - integration with HP Systems Insight Manager 16
  - inventory 20
- L**
  - legal notice 2
- M**
  - menu items
    - altiris 11
- N**
  - notice 2
  - notification policies 15
- P**
  - patent 2
  - policies
    - notification 15
  - product version 2
- R**
  - registration 9
- S**
  - snmp management 15
- T**
  - trademark 2
- U**
  - uninstalling 9
  - user interface 10
  - using 10
- V**
  - version 2