



Altiris® 6

Server Management Suite™

CREATING A FOUNDATION FOR BUSINESS AGILITY

Altiris® Server Management Suite™ gives IT administrators a comprehensive solution for managing business-critical servers and operations in their environment. Designed to simplify the entire server lifecycle, Server Management Suite provides deployment, management, and monitoring functions from a centralized console—automating operations, improving system availability, and reducing overall infrastructure costs.

BENEFITS

- > Secure management with role-and-scope-based security
- > Bare-metal imaging, deployment, and configuration
- > Comprehensive hardware and software inventory
- > Policy-based software management
- > Automated patch management
- > Real-time diagnosis and remediation
- > Availability and performance monitoring
- > Centralized management of mixed hardware and OS environments
- > Intuitive management interface with real-time dashboards and distribution wizards

COMPREHENSIVE IT LIFECYCLE MANAGEMENT

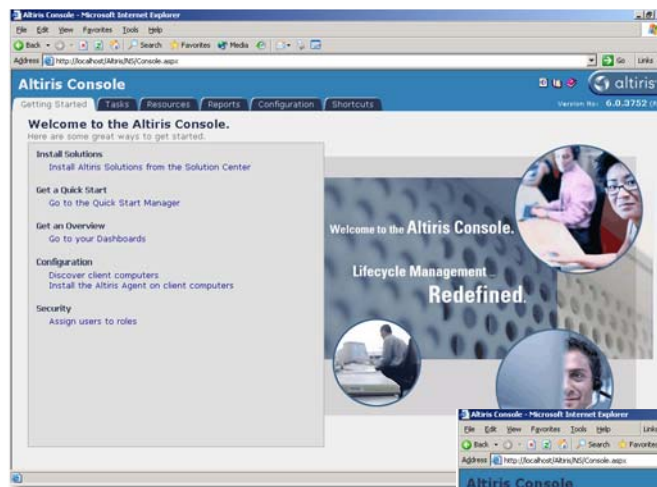
To meet today's IT challenges, the key is creating a flexible, efficient and available server environment. Altiris can help. Altiris pioneered the concept of IT lifecycle management by bringing together what was traditionally thought of as disparate management disciplines and integrating them on a single, extensible platform. Server Management Suite provides the access and centralized management of critical enterprise resources while ensuring consistent server states, minimizing security exposures, integrating disaster recovery, dynamically provisioning resources, and automating time-consuming manual tasks.

SECURE MANAGEMENT ENVIRONMENT

Server Management Suite's role-and-scope-based security model allows you to control access to every asset of your management environment. Control tasks that each administrator can perform based on employee role and responsibility. In addition, the scope of management tasks that can be performed on specific computers is likewise centrally governed ensuring complete control of all management tasks within your enterprise. The Altiris 6 Console also introduces Altiris' Adaptive Display Technology™ (ADT™), which dynamically modifies the console interface for each user based on administrator preferences, language settings, and management rights. ADT is based on end-user logon credentials and simplifies console navigation, reduces clutter, and improves administrator productivity by only displaying authorized tasks and resources.

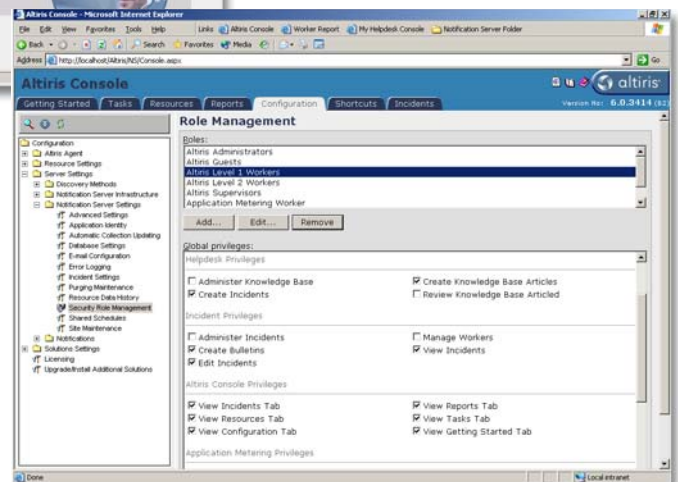
OS AND APPLICATION PROVISIONING

Server provisioning can be a time-consuming task fraught with human error. Server Management Suite provides powerful deployment features that allow



The Altiris Console's intuitive interface and Getting Started feature simplify training for new users.

Server Management Suite provides you with the most comprehensive, tightly integrated management solutions of any systems management vendor. Whether you are looking to consolidate servers or simply reduce costs, Server Management Suite saves you time and money by doing more with less.



Role-and-scope-based security enables administrators to designate console access rights.



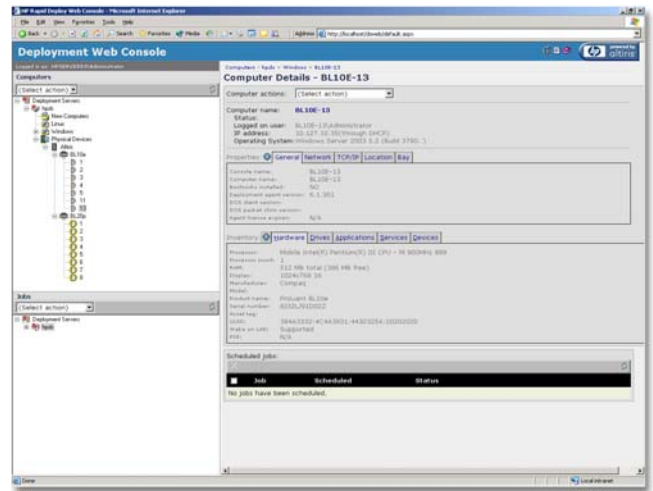
altiris®
intuitive > manageability

you to provision and configure large numbers of servers quickly and with consistent results. Not only does Altiris' deployment capabilities help install the operating system, but they give you flexible features that configure the network settings and install all the applications needed on your managed servers. Sophisticated workflow features help lock down installation order and source locations to ensure system security and correct operations. Server Management Suite also includes ongoing management features that give you maximum server availability. These features include replication of consistent server configurations from a single source, dynamically provisioning new or existing servers based on need, and the ability to manage multiple sites from a single console. Server Management Suite's bare metal operating system, network, and application stack provisioning make for rapid, reliable server deployment—and Windows* and Linux* are supported from the same console.

“Full discovery and accountability of our hardware and software inventory is now available to us in real-time in a matter of minutes as opposed to spending weeks to get a partial and often inaccurate report. Altiris has helped us standardize OS rollouts, save significant time and money by automating manual processes, and reduce human error to help us create a world-class data center.”

—PATRICK HANIFEE
Global Data Center
Systems Architect
Deloitte Consulting

enterprise platforms. Multi-platform support makes it easy to consolidate the discovery of all your Windows, Linux, and UNIX* assets within an integrated console (Macintosh*, handheld, and network device modules are also available). Server Management Suite aggregates inventory data

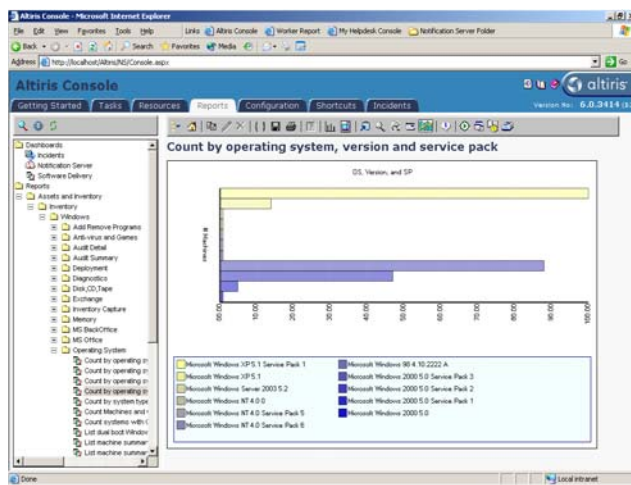


Comprehensive server blade support allows administrators to pre-assign images and configuration information to the rack, enclosure, or to a specific server in the bay.

COMPREHENSIVE INVENTORY

To effectively manage your enterprise, you need an accurate and thorough inventory of your server hardware and software. Knowing what you have and where it's located empowers you to reduce IT support costs, protect your network, improve success of software deployments, and focus on higher-level objectives. Server Management Suite provides powerful inventory gathering features that track all the hardware and software across your

environment so you can quickly and easily assess security vulnerabilities, prepare for software audits, and more accurately determine hardware needs and availability. Extensive reporting capabilities allow you to use the information to assess and plan for upgrades and migrations, track and manage server assets, and assist with server consolidation.



Altiris Web Reports provide comprehensive information about your IT environment.

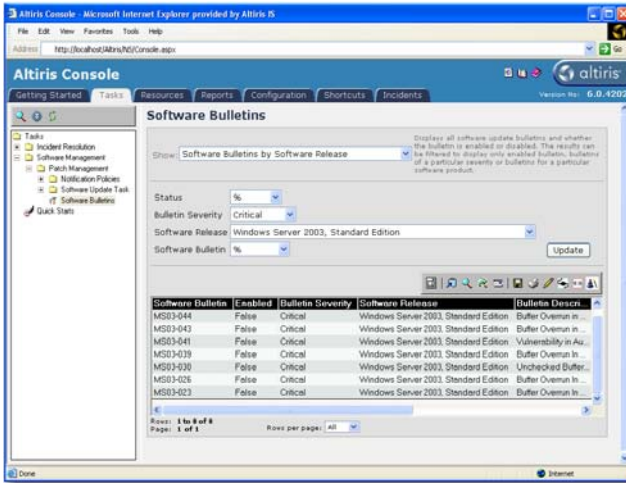
DESIRED-STATE MANAGEMENT

Your IT organization can spend a significant portion of its resources chasing configuration conflicts, verifying the accuracy of software updates, and repairing missing or changed files. By collecting baseline information and scheduling regular compliance checks, you can catch and repair conflicts before they cause a problem. Server Management Suite's desired-state management for Windows servers provides a simple, accurate way to detect computers with non-standard configurations. The suite's repair option returns the software settings back to their original value, decreasing the time IT staff spends resolving software conflicts.



ENTERPRISE SOFTWARE DELIVERY

Server Management Suite offers on-going, policy-based software delivery to target servers based on specific hardware and software configurations. The suite's features allow you to publish OS patches and new software packages or update existing software from the convenience of a centralized management console. Using the same interface, you can perform all of these tasks for your Windows, UNIX, and Linux computers.



Automate security updates distribution and vulnerability detection and remediation with Server Management Suite.

AUTOMATED PATCH MANAGEMENT

The sheer number of patches makes it difficult for your IT staff to identify and understand which patches need to be applied. Server Management Suite helps eliminate the manual process of gathering data by using an information repository specifically tailored to automate the patch management process. A centralized aggregate view of all available patches identifies open vulnerabilities ranked by severity. Once required patches are identified, distribution wizards provide automated package and policy creation for easy and secure distribution of all required patches and updates.

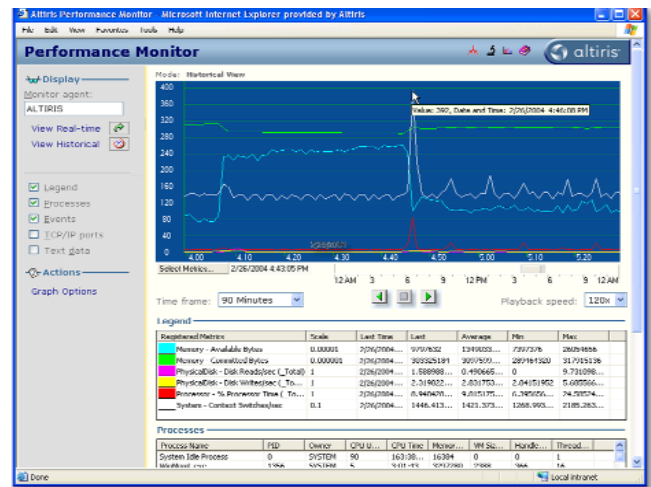
Altiris patch management capability also seamlessly integrates with Altiris® Recovery Solution™ for stable-state rollback in the event an applied patch causes system instabilities. By integrating automated patch management with recovery capabilities, Altiris® Patch Management Solution™ improves business continuity and accelerates IT systems security by reducing the need for extended patch test cycles.

PROGRESSIVE PROBLEM RESOLUTION

Server Management Suite provides essential tools for resolving your Windows system problems efficiently and easily. The suite helps you decrease run-around time for tasks that in the past required personal visits to the data center. A WMI browser allows you to instantly view vital statistics and operational parameters in real time, as well as access powerful diagnostic and security tools, such as port scan and traceroute. When a problem requires direct access to other tools and utilities, the suite's remote control capabilities can provide instant access for more in-depth troubleshooting, diagnosis, and correction. If a recent patch or software application disrupts server operations, Server Management Suite's integrated recovery solution allows you to quickly restore servers to a previous state to help ensure business continuity.

HEARTBEAT AND HEALTH MONITORING

With Server Management Suite you can easily monitor your server's system health and network resources by continually gathering and summarizing data to help keep your environment up and running 24 hours a day. In fact, the suite provides a variety of monitoring types that allow you to quickly determine whether server problems are related to network, system, or application performance. By tracking the overall availability of a server and its downtime, you can effectively compare against your organization's service level objectives.



Server Management Suite's Performance Monitor Console provides comprehensive system data for isolating issues.

“Server Management Suite offers a complete and powerful deployment environment with inventory, patch management, software delivery, remote control, monitoring, and app management capabilities. Managers willing to invest in the initial cost and configuration time should recover expenses rapidly.”

—INFOWORLD
Nov. 26, 2003

“Altiris Monitor Solution (a component of Server Management Suite) will not only enable us to monitor our system resources and applications in real-time but will also give us historical performance reports so we can identify and analyze trends. We already use Altiris software to manage our IT infrastructure so the integrated user interface will allow us to manage our entire environment using a single management solution.”

—DANNY DOUBTFIRE
Operations Manager
Financial Ombudsman



altiris®
intuitive > manageability

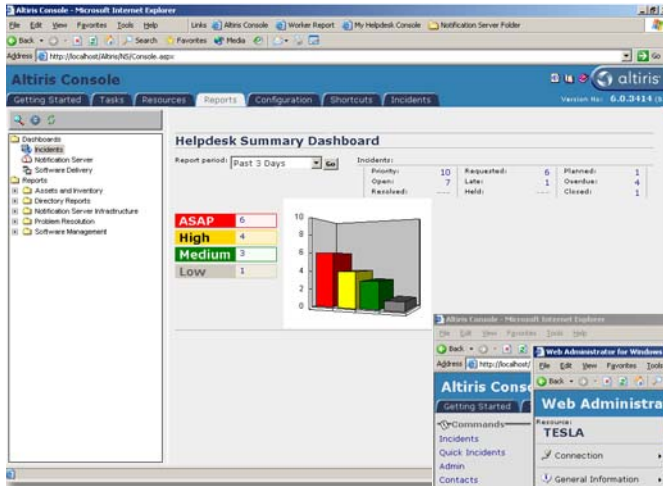
“Every company can benefit from platform provisioning. Reduced labor costs and improved reliability make this a simple decision that pays for itself.”

—GALEN SCHRECK
 “Which Provisioning Vendor?”
 Forrester Research, Inc.
 December 2002



FLEXIBLE ALERTING AND REPORTING

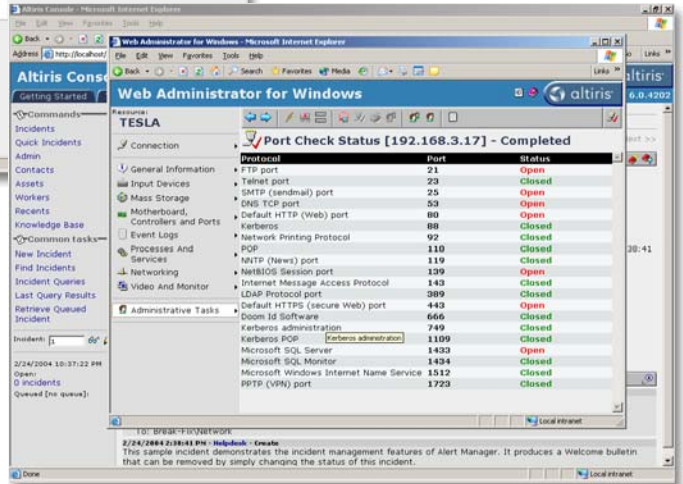
When critical thresholds are crossed, Server Management Suite automatically notifies network administrators through e-mail or the integrated Alert Manager™ console. The console allows administrators to track each problem and maintain a history of the issue—and it's 100 percent Web-based. Server Management Suite includes hundreds of Altiris' prepackaged Web Reports™ that help you track data from any Web browser.



Dashboards allow you to quickly and easily check real-time status of tasks, clients, and your environment.

EXTENSIBLE MANAGEMENT ARCHITECTURE

Server Management Suite is built on an Extensible Management Architecture™ (EMA™) that allows for a maturity model implementation strategy. The suite is organized in multiple levels of systems management, allowing your company to employ additional functionality as requirements increase and additional systems management demands are placed on your organization. Server Management Suite can grow with your organization providing the exact level of functionality required at all times to help IT become a driving force within your company. Level 1 addresses the essential elements your environment needs for provisioning and configuration management; level 2 functionality provides more proactive problem resolution capabilities; and level 3 introduces performance and availability monitoring to increase server efficiency.



Server Management Suite includes powerful diagnostic and security tools such as port scan and traceroute.

SYSTEM REQUIREMENTS

Server Management Suite requires that you install and configure the Altiris Notification Server™.

Notification Server Minimum Requirements

- > Processor—Pentium* III 800 MHz or faster
- > Memory—1 GB RAM
- > Hard drive—20 GB
- > Operating system—Windows* Server 2003 or Windows 2000 Server
- > Database—Microsoft* SQL Server 2000 SP3
- > Browser—Microsoft Internet Explorer 6 or later

Supported Windows Platforms

- > Windows NT Server 4.0
- > Windows 2000 Server
- > Windows Server 2003

Supported UNIX/Linux Platforms

Note: Not all Server Management Suite features are supported on all platforms.

- > AIX* 4.3.3, 5.1, 5.2
- > HP-UX* 10.20, 11, 11i
- > Red Hat* 7.2, 7.3, 8.0, Advanced Server 2.1
- > Solaris* 7, 8, 9 (Sparc)
- > SuSE* 8.0, 8.1, Enterprise Server 8
- > UnitedLinux* 1.0

TRY SERVER MANAGEMENT SUITE FOR FREE!

Get your 30-day, fully-functional evaluation copy of Server Management Suite at www.altiris.com/eval.



altiris[®]
 intuitive > manageability

Copyright © 2005, Altiris, Inc. All rights reserved. Altiris is a registered trademark, and Notification Server, Server Management Suite, and Web Reports are trademarks of Altiris, Inc. in the United States and other countries. *Other brands and names are the property of their respective owners.